



**Toilet roll holder
WLRH 144**
144x168x315 mm



**Toilet roll holder
WLRH U 31**
377x132x350 mm



**Waste container
WLAB U 18**
278x181x509 mm
WLLR 378
378x251x678 mm



**Toilet brush holder
WLTB 210**
105x110x310 mm



**Toilet roll holder
WLRH 321**
320x135x351 mm



**Hygiene waste
container
WLHB U 18**
278x181x509 mm



**Waste bin
CHRW 607**
438x315x628 mm
CHRW 608
355x172x505 mm

Equipment WHITE LINE

Franke HEAVY DUTY

Good looks with technical perfection

As the name implies, Franke's HEAVY DUTY range is designed for use in places where hard-wearing quality is an absolute must: public toilets and motorway rest-areas, prisons, police stations, public institutions, refugee centres, military establishments, campsites and toilet facilities for big open-air events.

Franke HEAVY DUTY washbasins, toilet bowls and shower pans are difficult to steal or vandalise, and they are designed to prevent injuries.



**Wash basin
WT 500 HD**
555x450x383 mm



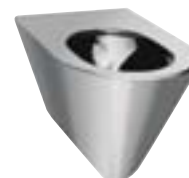
**WC wash basin
unit
HDTX 545**
WC left
HDTX 546
WC right
817x627x1020 mm



**Single urinal
CMPX 300**
300x390x650 mm



**Wash basin
ANMX 452**
560x400x460 mm



**Wall hung WC
HDTX 579**
standard, no seat
HDTX 580
with seat pads
360x500x348 mm



**Single urinal
CMPX 532**
380x350x600 mm
**Water free urinal
CMPX 532 WF**
380x350x600 mm



**Wash basin
ANMX 450**
450x400x280 mm



**WC for disabled people
HDTX 585**
standard, no seat
HDTX 586
with seat pads
360x700x348 mm



**Toilet roll holder HD
RH 140 HD**
140x110x110 mm



**Toilet roll dispenser
RB 320**
235x250x325 mm



**Ashtray
AT 145**
110x92x145 mm



**Jumbo toilet roll holder
RH 320**
320x130x320 mm



**Paper towel dispenser
TD 350**
258x127x350 mm



**Mirror
M 400 HD**
400x13x300 mm
M 500 HD
500x13x400 mm
M 600 HD
600x13x500 mm



**Toilet roll holder
HDTX 674**
410x130x150 mm



**Waste bin
GB 445**
410x225x445 mm



**Jumbo toilet roll holder
RH 320 R**
334x115x536 mm



**Vanity shelf
AL 300 HD**
300x80x30 mm



**Grab bar
CNTX 650**
650 mm



**Needle disposal box
NB 265**
110x92x265 mm



**Sanitary towel disposal bin
HR 350**
290x75x350 mm



**Soap dispenser
SD 300**
130x127x300 mm



**Double vanity shelf
TA 600 HD**
600x80x30 mm

Security items HEAVY DUTY

Franke CONTINA

Reliability without limits

Convenient and well laid-out bathrooms have long since stopped being the exclusive preserve of disabled-facility planning. Grab-handles made of easy-to-grip stainless steel have now started to make bathtime easier for everyone. We also supply customised finishes to the specifications of individual clients.



Grab rails
CNTX 300-1100
300-1100 mm



Angle bar 135°
CNTX 700 A
618 mm



Angle bar 90°, horizontal - vertical
CNTX 20 L
left
CNTX 20 R
right
1250x600 mm

CNTX 22 L
left
CNTX 22 R
right
750x415 mm



Angle bar 90°, horizontal - vertical
CNTX 21
415x415 mm



Angle bar 90°, horizontal - vertical
CNTX 23
252x522,5 mm



left

Side bar
CNTX 41 L
CNTX 41 R
127x500x127 mm
CNTX 42 L
CNTX 42 R
127x600x127 mm
CNTX 43 L
CNTX 43 R
127x700x127 mm
CNTX 40 L
CNTX 40 R
127x850x127 mm

left

Side bar, horizontal - vertical
CNTX 30 L
CNTX 30 R
 127x800x800 mm
CNTX 31 L
CNTX 31 R
 127x850x834 mm
 L = left
 R = right

Two way bar, angle 90°, horizontal - vertical
CNTX 50
 780x700x905 mm

Horizontal corner bar, horizontal
CNTX 52
 700x700 mm

Grab bar with toilet roll holder
CNTX 70 A
 100x850x249 mm
CNTX 70 C
 100x700x249 mm

Grab bar with toilet roll holder
CNTX 70 B
 100x850x249 mm
CNTX 70 D
 100x700x249 mm
CNTX 70 E
 100x600x249 mm

Grab bar with flushing button
CNTX 70 F
 100x850x249 mm

Fold down shower seat
CNTX 400 A
 484x526 mm

Fold down shower seat wall
CNTX 400 F
 484x529x457 mm

Hang in shower seat
CNTX 400 B
 484x520x456 mm

Hang in back support
CNTX 400 C
 484x158x427 mm

Wall mounting support
CNTX 400 E
 550x150,7x331 mm

Swingable mirror
CNTX 90
 600x490x90 mm

Mirror
CNTX 60 B
 600x10x1000 mm

Cloth hook
CHRX 695
 143x95 mm

Shower holder
CNTX 11
 110x80x70 mm

Shower holder
CNTX 10
 74x65x44 mm

Spare roll holder
CHRX 679
 for 2 rolls
 279,6x63,3 mm
CHRX 681
 for 3 rolls
 400x63,3 mm
CHRX 682
 for 4 rolls
 499,7x63,3 mm

Toilet roll holder
CNTX 12
 110x130 mm

Soap shelf
CNTX 13
 80x125 mm

All Grab rails can be delivered in white.
 Abbreviation CNTW (instead of CNTX).

Grab rails CONTINA

Franke RONDO

High-tech creations supplied by Franke

Stainless steel also counts as an ecologically friendly material, thanks not least to its excellent recycling properties.

It is for this reason, in addition to its clean lines and muted glow, that many innovative architects have taken to stainless steel with such enthusiasm. This is why the cool elegance of stainless steel figures in so much of contemporary design.



Round Inset Vanity Basin
RNDH 200
high polished
RNDX 200
satin finished
Ø 200x110 mm



Wash Hand Basin
RNDH 301
high polished
Ø 300x140 mm



Round Inset Vanity Basin
RNDH 420
high polished
RNDX 420
satin finished
Ø 418x160 mm



Round Inset Vanity Basin
RNDH 260
high polished
RNDX 260
satin finished
Ø 260x125 mm



Round Inset Vanity Basin
RNDH 360
high polished
RNDX 360
satin finished
Ø 357x150 mm



Wash Hand Basin
RNDH 340
high polished
RNDX 340
satin finished
Ø 340x150 mm



Round Inset Vanity Basin
RNDH 300
high polished
RNDX 300
satin finished
Ø 300x150 mm



Round Inset Vanity Basin
RNDH 381
high polished
RNDX 381
satin finished
Ø 380x157 mm



Wash Basin
BR 280 OU
Ø 330x160 mm



**Wash Hand Basin
RNDH 325-O**
high polished
Ø 380x270x117 mm



**Single Wash Basin
BS 210**
410x330x170 mm
Bowl: Ø 280x160 mm



**Single Wash Basin
BRP 390**
Ø 425x545x215 mm
Bowl: Ø 385x170 mm



**Trap cover
SC 140 HP**
high polished
SC 140 SF
satin finished
160x430x390 mm



**Oval Inset Vanity
Basin
RNDH 450-O**
high polished
RNDX 450-O
satin finished
Ø 450x330x155 mm



**Single Wash Basin
BS 211**
450x330x170 mm
Bowl: Ø 280x160 mm



**Single Wash Basin
BRC 390 HP**
high polished
Ø 425x545x215 mm
Bowl: Ø 385x170 mm



**Trap cover
SP 140 HP**
high polished
SP 140 SF
satin finished
160x427x675 mm



**Oval Inset Vanity
Basin
RNDH 451-O**
high polished
RNDX 451-O
satin finished
Ø 450x330x155 mm



**Single Wash Basin
BRC 210 HP**
high polished
410x330x170 mm
Bowl: Ø 280x160 mm



**Single Wash Basin
BRC 390 SF**
satin finished
Ø 425x545x215 mm
Bowl: Ø 385x170 mm



**Visitors wash table
RNDX 201**
shelf left
RNDX 202
shelf right
600x340 mm
Bowl: Ø 280 mm



**Einzelwaschtisch
BS 209**
345x330x170 mm
Becken: Ø 280x160 mm



**Single Wash Basin
BRC 210 SF**
satin finished
410x330x170 mm
Bowl: Ø 280x160 mm

Wash Basins and Inset Wash Bowl RONDO

Franke ANIMA

As versatile as nature itself

Franke washroom and sanitary fittings are ideal for those places where maximum-wear and demanding specifications are the order of the day - above all in the public and commercial sectors.



**Single wash basin
WT 400 C**
400x452x150 mm



**Single wash basin
WT 500 C**
500x446x150 mm



**Single wash basin
WT 600 C**
600x480x150 mm



**Siphon covering
ANMX 210**
160x325x390



**Siphon pillar
ANMX 211**
160x270x705 mm



**Single wash basin
WT 400 A**
400x410x140 mm



**Single wash basin
WT 500 A**
500x405x140 mm



**Single wash basin
WT 600 A**
600x440x145 mm



**Single wash basin
with tap ledge
BS 204**
without overflow
BS 205
with overflow
550x450x155 mm



**Undershield
BS 206**
536x244x410 mm



**Single wash basin
Publicio
BS 202**
without overflow
BS 203
with overflow
500x380x140 mm



**Splash back
BS 304**
500x12x210 mm



**Single wash basin
Publicio Star,
BS 200**
without overflow,
BS 201
with overflow,
448x400x145 mm



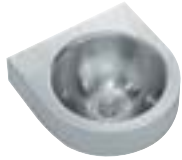
**Single wash basin
WT 310 E**
310x310x100 mm



**Single wash basin
WT 380 E**
310x380x100 mm



**Single wash basin
ANMX 205**
330x350x310 mm



**Single wash basin
WB 240 WM**
315x320x105 mm



**Drinking fountain
DF 240 WM**
315x320x105 mm



**Drinking fountain
ANMX 300**
315x260x200 mm



**Drinking fountain
with foot standing
ANMX 301**
315x260x840 mm



**Drinking fountain
with foot standing
ANMX 302**
325x900 mm



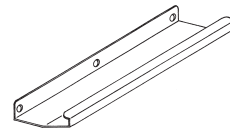
**Wash basin CONFORT
CM 700**
700x515x170 mm
(1 Bowl)
CM 1400
1400x515x170 mm
(2 Bowl)



**Towel rail
CMTB 70**
628x103 mm



**Rear panel assembly
with shelf
BXTS 70**
710x600x80 mm
BXTS 141
1410x600x80 mm
BXTS 211
2110x600x80 mm



**Shelf
suitable for
CONFORT
CMSV 600**
600x120x30 mm



**Wash basin
Rondo
WT 450**
450x450x175 mm



**Single wash basin
with tap ledge and
knee operations
LP 20**
450x450x175 mm



**Single wash basin
with tap ledge and
foot operation
LP 21**
450x450x850 mm



**Splash back
SB 450**
450x12x210 mm



Classroom basin
ANMW 310
 without tap hole
ANMW 311
 with tap hole
 600x140x360 mm



Classroom basin
ANMW 320
 without tap hole
ANMW 321
 with tap hole
 600x120x370 mm



Single wash basin
RNDW 101
 white
RNDB 101
 granite black/white
RNDS 101
 granite light grey
 600x200x540 mm



Single wash basin
RNDW 100
 white
RNDB 100
 granite black/white
RNDS 100
 granite light grey
 600x200x540 mm



Double wash basin
RNDW 201
 white
RNDB 201
 granite black/white
RNDS 201
 granite light grey
 1300x200x540 mm



Double wash basin
RNDW 200
 white
RNDB 200
 granite black/white
RNDS 200
 granite light grey
 800x200x530



End cup
RNDW 901
 white
RNDB 901
 granite black/white
RNDS 901
 granite light grey
 20x71x335 mm



Connection pieces
RNDW 900
 white
RNDB 900
 granite black/white
RNDW 900
 granite light grey 136x29/12x335



Double wash basin
RNDW 202
 1300x175x550 mm



Double wash basin
RNDW 204
 2004x175x535 mm



Single wash basin
 with tap hole
RNDW 102
 800x200x530



FUTURA EXKLUSIV – Wash row

2 Wash places, 1200x570
SANW 120
 3 Wash places, 1800x570
SANW 180

2 Wash places, 1200x570
SANW 120 F
 3 Wash places, 1800x570
SANW 180 F



FUTURA EXKLUSIV – Islands washstand

4 Wash places, 1200x1150
SANW 120 D
 6 Wash places, 1800x1150
SANW 180 D



Kindergarten double wash basins

with 2 Wash places
 920x460 mm
ANMC 102

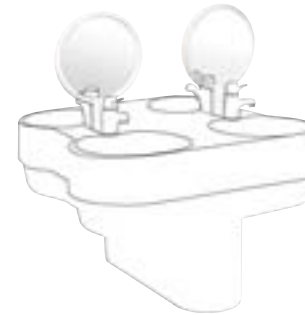
with 3 Wash places
 1420x460 mm
ANMC 103



KITA-MINICLUB-D Kindergarten wash basins

with 4 Wash places
 920x920 mm
ANMC 105

with 6 Wash places
 1420x920 mm
ANMC 104



Double mirror for KITA-MINICLUB

chromated
ANMC 900
 red (RAL 3020)
ANMR 900
 white
ANMW 900
 yellow (RAL 1023)
ANMY 900
 blue (RAL 5002)
ANMB 900

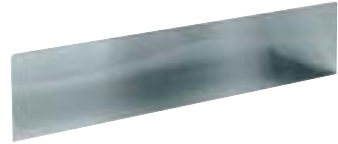
Franke SATURN

Timeless and robust

Franke's SATURN range offers a selection of well-designed products for use in the washroom and toilet facilities of industrial, commercial and workshop premises, clinics and the health sector, schools, sports centres, universities and government buildings.



**Washing trough
ECO 400 CS**
(Stainless steel 17)
600 to 3000x
400x160 mm



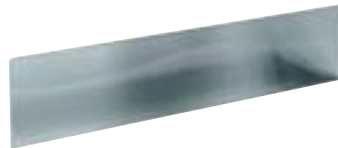
**Splash back
ECC 6-30**
(Stainless steel 17)
600 to 3000x266 mm



**Wall Bracket
SU 24**
30x242x160 mm



**Washing trough
ECN 400 CNS**
(Stainless steel 18/10)
600 to 3000x
400x160 mm



**Splash back
ECNC 6-30**
(Stainless steel 18/10)
600 to 3000x266 mm



**Towel rail
for wash troughs
TB 60**
528x103 mm
TB 70
628x103 mm



**Washing trough
BX 400 CNS**
(Stainless steel 18/10)
600 to 3000x
400x170 mm



**Wall Bracket
SU 39**
40x387x279 mm



**Splash back
BXC 60-280**
(Stainless steel 18/10)
600 to 2800x13x360 mm



**Rear Panel
Assembly
BXTS 121-241**
with shelf /
without taps
1210 to 2410x
80x600 mm



**Shelf
BXS 6-21**
600 to 2100x
142x138 mm



**Island wash trough unit
SANB 140**
1400x1280x1200 mm
2100x1280x1200 mm
2800x1280x1200 mm



**Island washstands BX 400 CNS
freestanding, not mounted
SANTI 20 CW**

1200x1050x1200
1400x1050x1200
1800x1050x1200
2100x1050x1200
2400x1050x1200
2800x1050x1200



**Wall Bracket
SU 39 TAB**
40x387x159 mm



**Towel rail
CMTB 70**
628x103 mm



**Medical trough
SANTI 750-755**
750 to 2250x400x500 mm



**Island washstands
SANB 141-281**
1400x1280x1200 mm
2100x1280x1200 mm
2800x1280x1200 mm

(with mirror attachment)



**Island washstands BX 400 CNS
with mirror attachment
freestanding, not mounted
SANTI 121**

1200x1050x1852
1400x1050x1852
1800x1050x1852
2100x1050x1852
2400x1050x1852
2800x1050x1852



Medical trough
1200x550x335
MT 12

1400x550x335
MT 14

1800x550x335
MT 18

2400x550x335
MT 24



**Island washstands
SANTI 120-280**
1200 to 2800x
1200 mm



**Island washstands BX 400 CNS
with mirror attachment
freestanding, not mounted
SANTI 121 CW**

1200x1050x1852
1400x1050x1852
1800x1050x1852
2100x1050x1852
2400x1050x1852
2800x1050x1852

Franke SIRIUS Laundry sinks

The cleaning of utensils and textiles is also covered by the hygienic, neutral-coloured and highly-resistant qualities of the right choice - the Franke stainless-steel range.



General purpose utility sink
CA 210/2
drain right
CA 210/7
drain left
750x500x320 mm



General purpose utility sink
Lavinox 1
BS 313
drain left
BS 314
drain right
750x500x320 mm



General purpose utility sink
BS 323
drain right with tap hole
BS 324
drain right without tap hole
670x520x285 mm



General purpose utility sink
Lavinox 2
BS 315
1420x500x320 mm



General purpose utility sink
BS 311
drain left
BS 312
drain right
700x460x280 mm



General purpose utility sink
Lavinox Junior
LTJ 450
470x430x240 mm



General purpose utility sink
Lavinox Junior
LTJ 500
520x490x240 mm



Wall mounted general purpose utility bowl
SIRX 340
500x450x240 mm



Inset general purpose utility sink
SIRX 342
500x450x240 mm



Wall mounted general purpose utility bowl
SIRX 343
560x485x237 mm



General Purpose
BS 351
left hand drainer
BS 352
right hand drainer
1100x550 mm



General Purpose
BS 353
2200x550 mm



Underframe for General Purpose Sink Tops
U 701 V
suitable for BS 351, BS 352
1040x518x870 mm
U 702 V
suitable for BS 353
2140x518x870 mm



Wall Bracket
SU 550
40x525x320 mm



Towel rail
TB 60
528x103 mm



General Purpose Sink Bowl
BS 330
600x500 mm



General Purpose Sink Bowl
BS 332
storage area left
BS 333
storage area right
1000x500 mm



General Purpose Sink
BS 347
 storage area left
BS 348
 storage area right
 1000x500x230 mm



Foot cleaning basin
SIRW 840
 570x320x570 mm



Floor standing Cleaners Sink
F 832 V
 600x600x650 mm



Plaster sink
SIRX 835 drainer left
SIRX 836 drainer right
 1000x600 mm



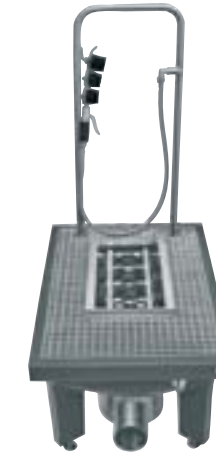
Inset General Purpose Sink Bowl
BS 340
 560x470x230 mm



Cleaners Sink
WB 500 GV
 500x500x160 mm



Cleaners Bucket
SIRX 832
 500x600x900 mm



Boot cleaning unit
SIRB 711
 600x425-450x900 mm
 with foldable grid



Multi Purpose Sink Bowl
MB 5044
 grey
MB 5042
 manhattan
MB 5041
 bahamabeige
 500x400x180 mm



Cleaners Sink ECONOM
BS 300
 with folding rest
BS 301
 without folding rest
 448x400 mm



Floor standing cleaners sink
SIRX 751
 1000x300x600 mm



Multi Purpose Sink Bowl
MB 7054
 grey
MB 7052
 manhattan
MB 7051
 bahamabeige
 700x495x295 mm



Cleaners Sink
BS 302
 with folding rest
BS 303
 without folding rest
 500x400 mm



Floor standing cleaners sink
SIRX 754
 1000x800x600 mm



Shoe and boot cleaning unit
SIRW 721
 1400x600 mm



Multi Purpose Sink Bowl
MB 7552
 manhattan
 740x495x280 mm



Splash back
BS 304
 500x12x210 mm



Sludge trap sink
SIRX 757
 600x290x550 mm



Shoe and boot cleaning unit
SIRW 711-741
 700-2800x600x500 mm

Franke CAMPUS

The fine art of standing out

The design of our CAMPUS toilets and urinals is in accord with the restrained minimalism of modern architecture.

Come across facilities like these in a public place and you will see how they induce a studied "cared for" air of total cleanliness and hygiene - even if the place is the most heavily-used imaginable.



Baby bath
CMPX 403
915x550x155 mm



Shower tray
BS 400
800x800x88 mm
BS 401
900x900x88 mm



Shower tray
CMPX 400
700x700x35 mm
CMPX 401
800x800x35 mm
CMPX 402
900x700x35 mm
CMPX 404
900x900x35 mm



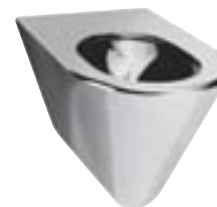
Squat pan
with flushing inlet
BS 502
575x655x195 mm



Squat pan
with flushing inlet
CMPX 502
without flushing inlet
CMPX 503
700x700x267 mm



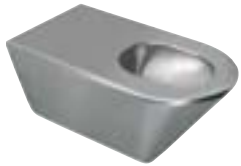
Wall hung WC pan
standard, without seat
CMPX 570
with 2 seat pads
CMPX 571
with toilet seat, white
CMPX 572 W
with toilet seat, acrylic
CMPX 572 T
360x500x360 mm



Wall hung toilet pan
standard, without seat
CMPX 579
with 2 seat pads
CMPX 580
with toilet seat, white
CMPX 581 W
with toilet seat, acrylic
CMPX 581 T
360x500x348 mm



Wall hung WC pan
standard, without seat
satin finish
CMPX 519
with 2 seat pads
CMPX 520
with toilet seat, white
CMPX 521 W
with toilet seat, acrylic
CMPX 521 T
342x568x392 mm



WC for disabled people standard, without seat
CMPX 585
 with 2 seat pads
CMPX 586
 with toilet seat, white
CMPX 587 W
 with toilet seat, acrylic
CMPX 587 T
 360x700x348 mm



Floor standing urinal
BS 550
 600x260x1076 mm
BS 551
 1200x260x1076 mm
BS 552
 1800x260x1076 mm
BS 553
 2400x260x1076 mm



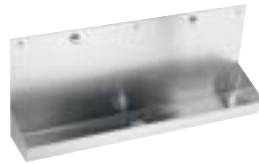
Single urinal
CMPX 300
 300x390x650 mm



Mounting system for recessed and pre-wall urinal flushings and electrical urinal flushings
AQFX 400
 500x1335x110 mm



WC for disabled people standard, without seat
CMPX 523
 with 2 seat pads
CMPX 524
 with toilet seat, white
CMPX 525 W
 with toilet seat, acrylic
CMPX 525 T
 392x700x355 mm



Wall hung trough urinal
BS 544
 600x252x500 mm
BS 545
 1200x252x500 mm
BS 546
 1800x252x500 mm
BS 547
 2400x252x500 mm



Single urinal
CMPX 532
 380x350x600 mm
Water free urinal
CMPX 532 WF
 380x350x600 mm



Mounting system for urinals with integrated trap control
CMPX 136
 500x1130-1400 mm



Floor standing WC standard, without seat
CMPX 582
 standard, without seat
CMPX 583
 with toilet seat, white
CMPX 584 W
 with toilet seat, acrylic
CMPX 584 T
 360x500x400 mm



Single urinal
CMPX 535
 330x345x500 mm



Urinal divider
CMPX 560
 30x400x760 mm



Mounting system for waterless urinals
CMPX 137
 500x1130-1400 mm



Pedestal WC pan standard, without seat
 high polished
BS 509
 with 2 seat pads
BS 510
 with toilet seat, white
BS 511
 345x515x395 mm



Single urinal
CMPX 530
 377x316x581,5 mm



Urinal divider
CMPX 700
 62x441x742 mm

Franke MAXIMA

The hard-wearing alternative

Franke's MAXIMA range supplies a selection of products designed for industrial-sector and workshop use, laboratories and the retailing and food-processing sectors.



**Commercial sink
MAXS 100-60**
600x600 mm
Bowl 450x400x250 mm



**Commercial sink
drain board left,
MAXS 217-160**
1600x600 mm
Bowl 2x450x400x250 mm



**Commercial sink
MAXS 100-70**
700x600 mm
Bowl 500x400x300 mm



**Commercial sink
drain board right,
MAXS 212-160**
1600x600 mm
Bowl 2x450x400x250 mm



**Commercial sink
drain board left,
MAXS 117-120**
1200x600 mm
Bowl 450x400x250 mm



**Commercial sink
drain board left,
MAXS 217-200**
2000x600 mm
Bowl 2x500x400x300 mm



**Commercial sink
drain board right,
MAXS 112-120**
1200x600 mm
Bowl 450x400x250 mm



**Commercial sink
drain board right,
MAXS 212-200**
2000x600 mm
Bowl 2x500x400x300 mm



**Commercial sink
drain board left,
MAXS 117-140**
1400x600 mm
Bowl 500x400x300 mm



**Commercial sink
drain board left, storage board right,
MAXS 227-260**
2600x600 mm
Bowl 2x500x400x300 mm



**Commercial sink
drain board right,
MAXS 112-140**
1400x600 mm
Bowl 500x400x300 mm



**Commercial sink
drain board right, storage board left,
MAXS 222-260**
2600x600 mm
Bowl 2x500x400x300 mm



**Commercial sink
MAXS 200-120**
1200x600 mm
Bowl 2x500x400x300 mm



**Commercial sink
MAXL 100-70**
700x700 mm
Bowl 500x500x300 mm



Commercial sink
MAXL 200-120
 1200x700 mm
 Bowl 500x500x300 mm



Commercial sink
 drain board left
MAXL 117-140
 1400x700 mm
 Bowl 600x500x300 mm



Commercial sink
 drain board right
MAXL 112-140
 1400x700 mm
 Bowl 600x500x300 mm



Commercial sink
 drain board left
MAXL 217-200
 2000x700 mm
 Bowl 2x600x500x300 mm



Commercial sink
 drain board right
MAXL 212-200
 2000x700 mm
 Bowl 2x600x500x300 mm



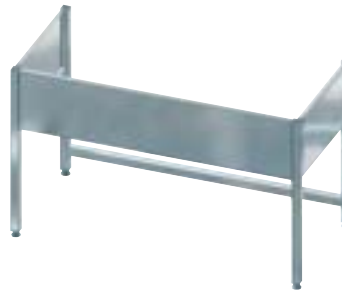
Commercial sink
 drain board left, storage board right
MAXL 227-260
 2600x700 mm
 Bowl 2x600x500x300 mm



Commercial sink
 drain board right, storage board left
MAXL 222-260
 2600x700 mm
 Bowl 2x600x500x300 mm



Commercial sink
 drain board right,
 place for dishwasher
MAXL 112-140 DW
 1400x700 mm
 Bowl 600x500x300 mm



Underframe for
commercial sinks
MAXIMA
 600 mm depth
MAXF 60-60
 600x600
MAXF 70-60
 700x600
MAXF 120-60
 1200x600
MAXF 140-60
 1400x600
MAXF 160-60
 1600x600
MAXF 200-60
 2000x600
MAXF 260-60
 2600x600



Underframe for
commercial sinks
MAXIMA
 700 mm depth
MAXF 70-70
 700x700
MAXF 120-70
 1200x700
MAXF 140-70
 1400x700
MAXF 200-70
 2000x700
MAXF 260-70
 2600x700



Bracket
 600 mm depth
MAXB 600
 700 mm depth
MAXB 700



Shelve for
commercial sinks
MAXIMA 600
 600 mm depth
MAXT 60-60
 600x600
MAXT 70-60
 700x600
MAXT 120-60
 1200x600
MAXT 140-60
 1400x600
MAXT 160-60
 1600x600
MAXT 200-60
 2000x600
MAXT 260-60
 2600x600



Shelve for
commercial sinks
MAXIMA 700
 700 mm depth
MAXT 70-70
 700x700
MAXT 120-70
 1200x700
MAXT 140-70
 1400x700
MAXT 200-70
 2000x700
MAXT 260-70
 2600x700

Franke TAPS

Elegant and professional

Tap fittings are becoming ever more sophisticated when it comes to water saving and ease of operation. They operate without physical contact, and help protect users against infections such as legionnaire's disease. The technologically advanced valves are designed to open and shut smoothly many millions of times. The use of robust materials and surface finishes makes these fittings suitable also for vandal-resistant applications. Whether for public, commercial, industrial or private premises – we have the right fitting for every situation.



Wash basin tap
AQBE 150
 with integrated soap dispenser
AQBE 151
 with integrated soap dispenser
 and disinfectant



Non-touch, washbasin mixer, with battery-operated optoelectronic control, with temperature lever
AQRE 130
 with concealed mixing device
AQRE 132



Non-touch, washbasin fitting, battery-operated
AQRE 131



Non-touch, washbasin mixer, with optoelectronic control powered from separate mains unit, 230V~with temperature lever
AQRE 133
 230V~with concealed mixing device
AQRE 135



Non-touch, washbasin mixer, DN 15, with optoelectronic control for open low-level domestic hot water heaters
AQRE 136
 230V~



Remote control
AQRE 900



Self-closing pillar tap
AQRM 150



Self-closing bibtap
AQRM 250



Self-closing single mixer as pillar mixer
AQRM 171



Drinking fountain tap
AQBM 300



Self-closing single mixer, for wall-mounting with angled outlet
AQRM 273



Self-closing single mixer, for wall-mounting with lockable swivel outlet, nosing 173 mm
AQRM 271
 nosing 233 mm
AQRM 272



Wall outlet
 nosing 234 mm
AQRM 905
 nosing 165 mm
AQRM 906
 nosing 78 mm
AQRM 907



Low-level thermostatic anti-scaling device with connection set,
AQRM 310



Self-closing stop valve with internal thread
AQRM 666
 with union connector
AQRM 667



Self-closing stop valve
AQRM 668
 Extension set, 33 mm
AQRM 900



Self-closing stop valve for wall installation
AQRM 677



Self-closing single mixer
AQRM 650



Self-closing single mixer, for installation in walls
basic installation kit **AQRM 657**
finished installation kit **AQRM 656**



Final Self-closing thermostatic mixer, for installation in walls
basic installation kit **AQRM 660**
finished installation kit **AQRM 659**



Electronically timed thermostatic mixer for installation in walls
24 V~basic installation kit **AQRE 631**
24 V~finished installation kit **AQRE 630**



Electronically timed shower fitting
24 V~
AQRE 632



Shower panel with glass front, for surface mounting, with self-closing single mixer
AQRM 651



Shower panel with glass front for surface installation with self-closing thermostat mixer
AQRM 652



Shower panel with glass front for surface installation with electronic timer
AQRE 633



Shower panel with glass front for surface installation with thermostat mixer and electronic timer
AQRE 636



Shower panel made of stainless steel for surface mounting, with self-closing single mixer
AQRM 653



Shower panel made of stainless steel for surface installation with self-closing valve and thermostat mixer
AQRM 655



Shower panel made of stainless steel for surface installation with electronic timer.
AQRE 635



Shower panel made of stainless steel for surface installation with thermostat mixer and electronic timer
AQRE 634



Shower panel made of stainless steel for surface installation with self-closing stop valve and drench shower (60 l/min)
AQRM 661



Shower panel made of stainless steel for surface installation with self-closing stop valve
AQRM 665



Free-standing stainless steel self-closing shower
AQRM 670

with hose connector
AQRM 671

with foot shower and additional self-closing stop valve
AQRM 672



Comfort shower head with angle-adjustable plastic jet face
9l/min.
AQRM 960
12l/min.
AQRM 961



Shower head (9l/min.)
AQRM 962
(12l/min.)
AQRM 963



Urinal flush valve
AQRM 460



Urinal flush valve for installation in walls
basic installation kit **AQRE 434**
finished install. kit **AQRM 461**



Non-touch, opto-electronically controlled urinal flush valve with battery operation
AQRE 430



Urinal flush valve for installation in walls
basic installation kit **AQRE 434**
finished install. kit **AQRE 431, 432, 433, 435**



WC flush valve
AQRM 550



WC flush valve for installation in walls
basic installation kit **AQRM 558**
finished install. kit **AQRM 557**



WC flush valve with remote control
AQRM 553



Non-touch, opto-electronically controlled WC flush fitting for recessed wall installation, suitable for handicapped users
24 V~basic installation kit **AQRE 521**
24 V~finished instal, kit **AQRE 520**



Trap control
AQBE 420



WC flush valve
Anschluss 1/2" **AQRM 551**
Anschluss 3/4" **AQRM 552**



Mounting system for recessed and pre-wall urinal flushings and electronic urinal flushings
AQFX 400
500x1335x110 mm



Installation element for washbasins
AQFX 100
500x1185x110 mm



Mounting system for urinals with integrated trap control
CMPX 136



Mounting system for waterfree urinals
CMPX 137



Franke GesmbH
Oberer Achdamm 52
6971 Hard
Austria

Telefon +43 5574 6735 0
Telefax +43 5574 62411
www.franke-wss.com